

THE WARD FOUNDATION, INC. PRESENTS

# WARD WORLD CHAMPIONSHIP

WILDFOWL CARVING COMPETITION & ART FESTIVAL

**2024**

COMPETITION  
GUIDE

**LIVING  
LEGENDS**

WORLD CLASS ART

**VENDORS**

CLASSES, LECTURES,  
& MORE



**WARD MUSEUM OF  
WILDFOWL ART  
POP-UP EXHIBIT**



# Guyette & Deeter, Inc.

The Leading and Most Trusted Decoy Auction Firm in the World  
Guaranteed Condition Reports

Conveniently located in St. Michaels, Maryland.

The only auction house prepared to handle the delicate masterpieces from the Ward World Championship's best artists.

Contact Jon Deeter, 440-610-1768 or Zac Cote, 207-321-8091 to discuss.

Recent sales of decoratives in Guyette & Deeter auctions.



Gary Eigenberger | \$8,400



Larry Bart | \$14,520



Pat Godin | \$19,360

410-745-0485

[guyetteanddeeter.com](http://guyetteanddeeter.com)

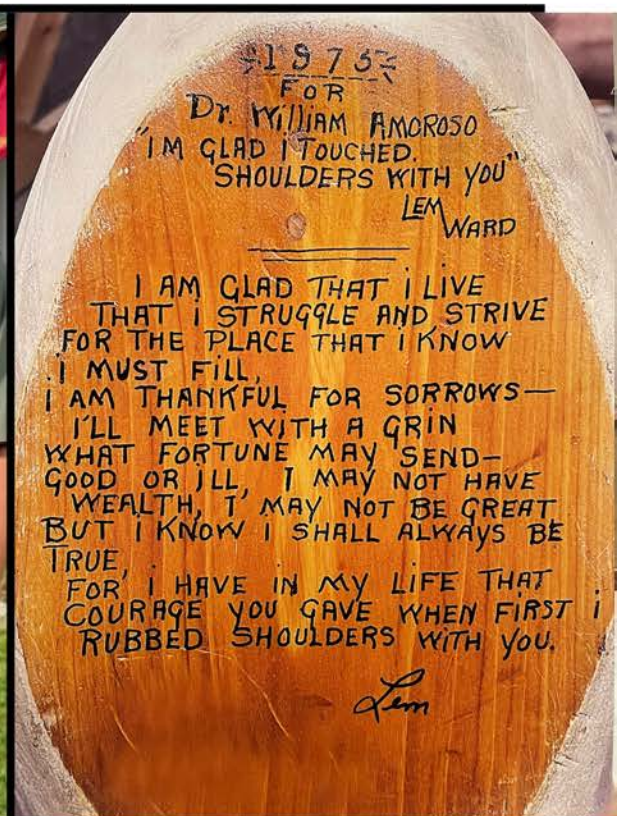
1210 S. Talbot St, Unit A

St. Michaels, MD 21663



Gary Yoder | \$12,100





# MESSAGE FROM THE WARD FOUNDATION

Ladies and gentlemen, art enthusiasts, and esteemed participants, welcome to the much-anticipated 2024 Ward World Championship Wildfowl Carving Competition and Art Festival, hosted by The Ward Foundation! It is with great joy and enthusiasm that we extend our warmest welcome to you all as we gather once again in the picturesque Ocean City, Maryland. This year's festival promises to be an extraordinary celebration of artistic mastery and creativity.

Our venue, AB Hall, at the Roland E Powell Convention Center, is set to come alive with the mesmerizing display of your incredible wildfowl carvings. The intricate details, passion, and skill poured into each piece create a vibrant tapestry of artistic expression that captivates and inspires all who attend.

The grandeur of the festival extends beyond the competition itself, as we come together to honor and celebrate the Living Legend Award recipients. The prestigious ceremony and dinner will take place at the elegant Grand Hotel, offering a night of recognition and appreciation for individuals whose contributions have left an indelible mark on the world of wildfowl carving.

As we embark on the 53rd year of this remarkable journey, we extend our heartfelt gratitude to each and every one of you who has played a role in shaping the legacy of the Ward World Championship. Your unwavering support has fueled our passion, and together, we continue to carve new paths and set the stage for future generations of artists.

So, let the 2024 Ward World Championship Wildfowl Carving Competition and Art Festival be a testament to the enduring spirit of creativity, camaraderie, and the profound impact of the artistry that binds us all. Thank you for being an integral part of this incredible legacy, and we eagerly anticipate the beauty and brilliance that will unfold throughout this year's festivities. Cheers to the art, the artists, and the everlasting magic of wildfowl carving!





# ACCOMMODATING FRIENDS

## PLEASE SUPPORT THE HOTELS AND MOTELS THAT SUPPORT US!

IDENTIFY YOURSELF AS AN ATTENDEE OF THE 2024 WARD WILDFOWL CARVING COMPETITION TO ENSURE ANY SPECIAL RATES THAT MAY BE AVAILABLE. EARLY RESERVATIONS ARE SUGGESTED. ALL RATES ARE BASED ON AVAILABILITY AND MAY NOT INCLUDE APPLICABLE TAXES. **ADDITIONAL VISITOR INFORMATION IS AVAILABLE FROM THE OCEAN CITY CONVENTION & VISITORS BUREAU UNDER THE TOWN OF OCEAN CITY DEPT. OF TOURISM: 1-800-OC-OCEAN, [WWW.OCOCEAN.COM](http://WWW.OCOCEAN.COM).**

Please call one of the following hotels and motels for rates

Aloft Ocean City  
4501 Coastal Highway  
Ocean City, MD 21842  
443-373-0800

Coastal Palms Beach Hotel  
120th St. Ocean Block  
Ocean City, MD 21842  
410-289-6846  
800-552-7263

Hilton Suites  
3200 N. Baltimore Avenue  
Ocean City, MD 21842  
410-289-6444  
866-729-3200

Residence Inn by Marriott  
Ocean City  
61st St & Bay  
Ocean City, MD 21842  
410-732-2222 ext. 5009

Barefoot Mailman Motel  
#16 35th St. Oceanside  
Ocean City, MD 21842  
410-289-5343  
800-395-3668

Comfort Inn Gold Coast  
112th St. & Coastal Highway  
Ocean City, MD 21842  
410-524-3000  
800-228-5150

Holiday Inn Oceanfront  
67th St. & the Ocean  
Ocean City, MD 21842  
410-524-1600  
800-638-2106

Sea Bay Hotel  
6007 Coastal Highway  
Ocean City, MD 21842  
410-524-6100  
800-888-2229

Best Western Ocean City  
Hotel & Suites  
5501 Coastal Highway  
Ocean City, MD 21842  
443-664-4001  
866-664-4004

Country Inn & Suites by  
Radisson  
12303 Coastal Highway  
Ocean City, MD 21842  
410-250-1900  
800-552-7263

Paradise Plaza Inn  
3 9th St. 9th St. & Boardwalk  
Ocean City, MD 21842  
410-289-6381  
888-678-4111

Spinnaker Motel  
18th St. & Baltimore  
Avenue  
Ocean City, MD 21842  
410-289-5444  
800-638-3244

Best Western Plus Ocean City  
6007 Coastal Highway  
Ocean City, MD 21843  
410-524-6100  
800-780-7234

Days Inn Oceanfront  
23rd St. & Boardwalk  
Ocean City, MD 21842  
410-289-9103  
800-926-1122

Park Place Hotel  
207 N Atlantic Ave  
Ocean City, MD 21842  
410-289-6440  
888-212-7275 al C

Surf Inn Suites  
7100 Coastal Highway  
Ocean City, MD 21842  
Use Promo Code Ward  
410-524-7100

Burgundy Inn Hotel  
1210 Philadelphia Ave  
Ocean City, MD 21842  
800-428-1108

Dunes Suites  
2800 Baltimore Avenue  
Ocean City, MD 21842  
410-289-1100  
800-523-2888

Princess Bayside Beach Hotel  
48th St. & Coastal Highway  
Ocean City, MD 21842  
410-723-2900  
800-854-9785

Talbot Inn  
311 Talbot St  
Ocean City, MD 21842  
410-289-9125  
800-659-7703

Cambria Hotel Ocean City -  
Bayfront  
13 St Louis Ave  
Ocean City, MD 21842  
410-289-1645

Fairfield Inn & Suites Ocean City and Conference Center  
2501 Philadelphia Ave.  
Ocean City, MD 21842  
410-289-5000  
800-228-2800

Princess Royale Resort  
9100 Coastal Hwy  
Ocean City, MD 21842  
410-524-7777  
800-4-ROYALE

Tidelands Caribbean  
Hotel & Suites  
409 Atlantic Ave  
Ocean City, MD 21842  
410-289-9455

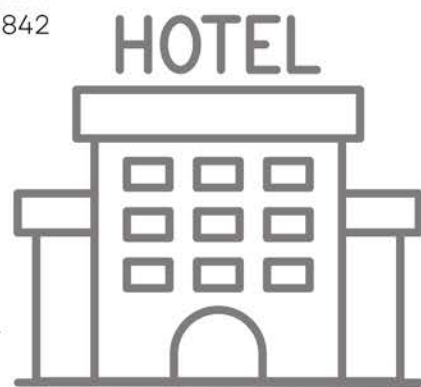
Castle in the Sand Hotel  
3701 Atlantic Avenue  
Ocean City, MD 21842  
410-289-6846  
800-552-7263

Quality Inn Oceanfront  
54th St. & the Ocean  
Ocean City, MD 21842  
410-524-7200  
800-837-3586



**Grand Hotel & Spa**  
**2100 Baltimore Avenue**  
**Ocean City, MD 21842**  
**410-289-6191**  
**800-447-6779**

**Living Legend Dinner**  
**is held here.**





## INFO & TABLE OF CONTENTS

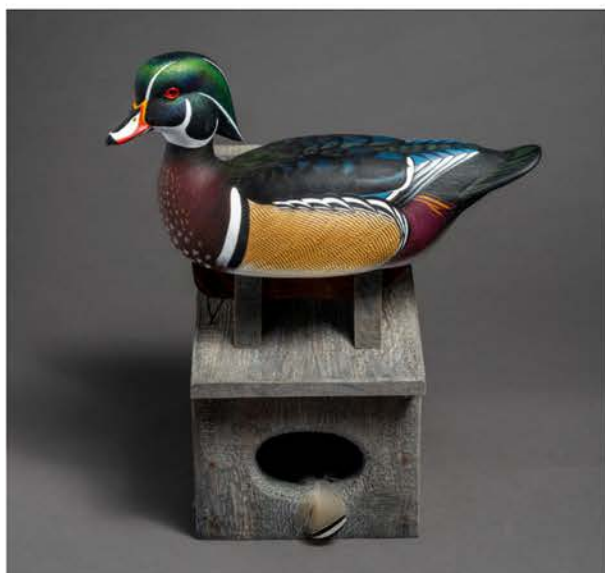


### SHOW HOURS

<b>Friday, April 26</b>	10 a.m. - 5 p.m.
Living Legends Award Dinner & Presentation	5:30 p.m. - 8 p.m.
<b>Saturday, April 27</b>	9 a.m. - 5 p.m.
<b>Sunday, April 28</b>	10 a.m. - 3 p.m.
Award Ceremony	Noon

### ADMISSION

<b>Multi-Day Pass</b>	\$10
<b>Seniors &amp; Students</b>	\$8
<b>Children 12 &amp; Under</b>	Free With an adult



Accommodating Friends	3
2024 Ward Foundation Living Legends	5
Ward World Championship Rules	6
Registration	9
World Division	12
Leveled Competition	14
A. Danner Frazer Youth Competition	19
Lem & Steve Ward Competition	22



### ENTRY FEES

*All NON-MEMBERS will be charged a \$10 admin fee at registration*

<b>World Class</b>	\$150 each Division
<b>Masters Class</b>	\$100 first entry, \$50 each add'l
<b>Advanced</b>	\$60 first entry, \$35 each add'l
<b>Intermediate</b>	\$35 first entry, \$15 each add'l
<b>Novice</b>	\$20 first entry, \$10 each add'l
<b>Youth</b>	Paid for by Gary & Pam Stenger
<b>Sculpture</b>	\$75 first entry, \$35 each add'l
<b>Lem &amp; Steve Ward Divisions</b>	\$35 first entry, \$15 each add'l



Official Species Designations	26
Ward Worlds Wildfowl Competition Diagram	18
Happenings	5

### COMPETITION COMMITTEE

Kristie Clattenburg (Chair),  
Jack Cox, Del Herbert, Tom Horn, Arthur  
Leonard (Board Liaison), Pam Morris,  
Bennett Scott, Rich Smoker

Funded in part by





# HAPPENINGS



## Classes, Workshops, Lectures, & Panels

**Watch our website store, [wardfdn.org](http://wardfdn.org), for upcoming classes, lectures, and panels!**

### **Some of our instructors and speakers:**

Dan Burgette, Tom Christie, Pat Godin, Josh Guge, Jim Higgins, Al Jordan, Robert Kroese, Art Leonard, Tom Matus, Rich Smoker, Ross Smoker, Dick Snyder, Laurie Truehart, and so many more!

*VISIT OUR WEBSITE TO SIGN UP FOR CLASSES. SIGN UP AT THE SHOW FOR SEMINARS, WORKSHOPS, & PANELS*

## Sponsors

Art League of Ocean City, Benelli USA, Jeff Bounds, Marg Bounds, Chincoteague Decoy Carvers & Artist Association, Tom Christie, Capt. Tommy Cornicelli, Jack Cox, Delmarva Decoy Collectors Association, Josh & Laura Guge, Guyette & Deeter, Habbart Dean Memorial Fund, Dr. Ruth Carroll & Dr. Kent Kimmel, Louisiana Wildfowl Carvers & Collectors Guild, Maryland Folklife, Maryland Heritage Area Authority, Maryland State Arts Council, MDI Wood Carvers Supply, Midshore Chapter of Delta Waterfowl, Minuteman Press, National Endowment for the Arts, Ocean City Accommodations, Nancy Pearce, Rich Smoker Heritage Award Fund, Salisbury Wicomico Arts Council, Sharp Gas & Energy, Gary & Pam Stenger, Tommy Stewart, C. John Sullivan, The Paper People, VanNuys Foundation, Worcester County Arts Council, Karl & Deb Yankey, and many more.



## Pop-Up Exhibit

Get ready for an extra splash of excitement at the 2024 Ward World Championship Wildfowl Carving Competition and Art Festival! We're thrilled to announce a wild and whimsical addition to the festivities – the Ward Museum of Wildfowl Art Pop-Up Exhibit: Around the World in 80 Carvings! Picture this: a treasure trove of feathered wonders housed in Room 201 upstairs at the Ocean City Convention Center.

Stay tuned for the scoop on all the feathery details – we'll be unveiling more as the show approaches. Keep your eyes peeled, and your binoculars at the ready, as updates will be soaring onto our website soon.

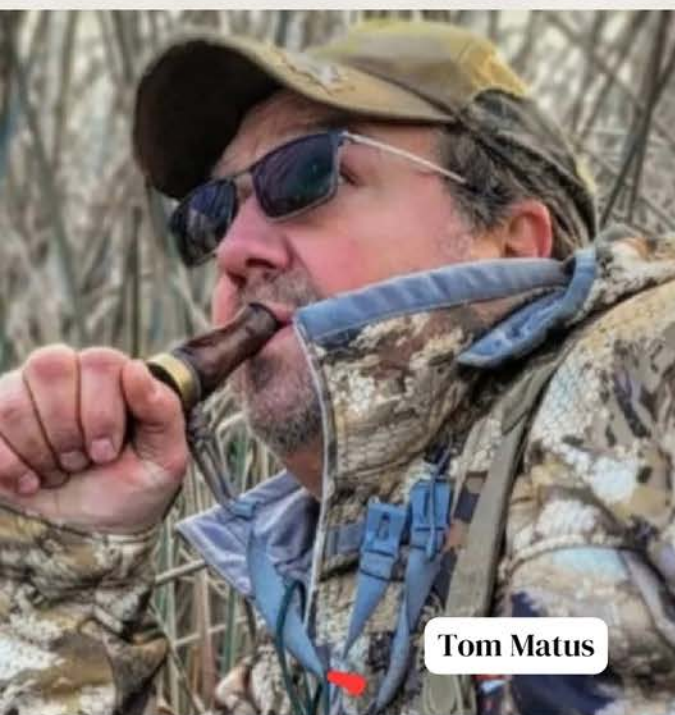




Paul Rhymer



Pam Morris



Tom Matus

# 2024

# LIVING LEGENDS

**This award recognizes individuals who:**

- Have been long-time advocates for wildfowl art and the Ward Foundation.
- Are generous in spirit and commitment to teaching others and passing on their knowledge, skills, and talents.
- Have created an impact on the field of wildfowl art and/or the Ward World Championship Wildfowl Carving Competition.

**Living Legend Award Ceremony and Dinner**  
The Grand Hotel Friday, April 26 • Reception begins at 5:30 p.m.

Celebrate the 2024 Living Legends on Friday, April 26. Enjoy an evening honoring this year's recipients at the Grand Hotel & Spa, located on the famous Ocean City boardwalk. Tickets are \$75 for Ward Museum members and \$85 for non-members. Seats are limited, get your tickets early. Tickets and sponsorship of the Living Legend Dinner can be purchased on the Ward Foundation website at [www.wardfdn.org](http://www.wardfdn.org).

The Grand Hotel is offering special rates to all carvers, competitors, and guests. Give them a call at 800-447-6779 for special early bird rates. Consider a sponsorship of this event. The Living Legend awards are made possible through the generous support of the wildfowl art community. Gifts of \$150 or more will be recognized as sponsors of the awards. Gifts of \$250 or more will be recognized as Signature Sponsors and will receive two tickets to the dinner and enhanced recognition.

**GRAND**  
HOTEL



# WORLD COMPETITION RULES

THE COMPETITION IS OPEN TO WOOD SCULPTORS OF ANY LEVEL OF ARTISTIC SKILL. IN ADDITION TO WORLD AND MASTERS, THERE ARE THREE GENERAL LEVELS OF COMPETITION: ADVANCED, INTERMEDIATE AND NOVICE.

## Competition Levels

Carvings are grouped together by levels indicated by colored banners hanging over the display areas.

- **World (white banners):** In the six World Divisions, entrants compete for the title of World Champion, championship ring and cash award.

- **Masters (turquoise banners):** Only carvers who have previously won two Best of Show awards in Advanced, or placed 1st, 2nd or 3rd in World in any division other than SR Shootin' Rig are eligible to enter in Masters and are no longer eligible to enter Advanced. They are eligible to enter any of the four divisions of the Masters Class competition and/ or they may elect to compete for a World title. This applies to either an individual carver or a carver in partnership with another artist. If it is discovered that a carver has entered Masters without meeting the eligibility requirement, the entry will be immediately removed from the Masters area. If judging has already occurred, any awards will be rescinded.

- **Advanced (blue banners):** This level represents advanced amateur and professional carvers, including those who have obtained top rankings in competitions. Entrants compete for cash awards, ribbons, and rosettes. Advanced is not open to MASTER carvers. Any carver who is not eligible for Masters but has entered at the World Level must enter Advanced.

- **Intermediate (yellow banners):** This level includes carvers who have refined their sculpture and painting skills beyond the novice level. Intermediate carvers compete for ribbons, rosettes, and Best in Show cash awards. Carvers who have won one Best in Show or two Best in Division (excluding Bench) awards at this level in the World Competition must move to the Advanced level. Carvers who have been consistent blue ribbon winners at this level are encouraged to move up to Advanced.

- **Novice (red banners):** This level is reserved for entry-level carvers. Novice carvers compete for ribbons, rosettes and Best in Show cash awards. Carvers who have won one Best in Show or two Best in Division (excluding Bench) awards at this level in the World Competition must move to the Intermediate level. Carvers who have been consistent blue ribbon winners at this level are encouraged to move up to Intermediate.



## Judging Criteria

The following definitions of judging criteria have been adopted by the Ward Foundation. Each criteria is given equal weight in the judging process. The higher the level the more critically assessed. These criteria will be used for all of the following levels of competition—World, Masters, Advanced, Intermediate, and Novice—in all divisions except Interpretive:

- **Technique/Craftsmanship** refers to the technical skills involved in bird carving: sculpting, painting and finishing techniques and their execution. It covers the bird or birds, any habitat or accessories that may be involved and the base itself if there is one. Craftsmanship should be consistent throughout the entire piece. Good craftsmanship is basic to bird carving. Without it, a piece will go no further.

- **Accuracy** involves the correctness of a piece from a scientific perspective. Is the bird the right size? Are the feathers the right shape? Is the coloration and pattern correct? Are the eyes properly placed? Do the toes have the right number of joints and are they in the right places? All these are questions of accuracy. Anything accompanying the bird must be given the same scrutiny. Accuracy involves the natural history of the whole piece, all of its components and the appropriateness of these components together.

- **Essence of the Species** involves taking accuracy one step further. It involves a thorough knowledge of one's subject and the ability to capture an attitude in wood. You see a bird on your lawn at dusk. You can't see any details in the failing light, just a silhouette, and yet the hop and cock of the head immediately identify it as a robin. The essence of the bird is there without a feather count, a measurement of length or a check on color. You may have flawlessly crafted your bird with faultless accuracy, but unless you have captured the essence of your subject and given it the spark that brings it alive, your bird will not achieve its fullest potential.

- **Artistry** of a piece involves its design and composition. This is where presentation, innovation and creativity all come into play. There should be a beauty in the concept apart from the beauty of the bird itself. Line, form, content, color, mass and movement should all be working together to create an integrated whole. Of all the concerns in carving, artistry is the most elusive, the most difficult to explain, to teach, to analyze in the work of others, and to instill in one's own work. But the difficulty is an indication of the importance.



# WORLD COMPETITION RULES

THE COMPETITION IS OPEN TO WOOD SCULPTORS OF ANY LEVEL OF ARTISTIC SKILL. IN ADDITION TO WORLD AND MASTERS, THERE ARE THREE GENERAL LEVELS OF COMPETITION: ADVANCED, INTERMEDIATE AND NOVICE.

## Judging Criteria

- Overall Presentation. What is rare is often what is valuable. Bird carving requires a multitude of technical skills brought together in the overall presentation. Additionally, it requires a thorough knowledge and understanding of birds scientifically as well as emotionally. But most importantly, it involves the ability to bring all these elements together artistically. If bird carving is to move beyond craft to art, our goals and expectations must do the same. No artificial lighting will be used during judging, artificial lights (handheld or tabletop) are not permitted and will not be on the display.

- All criteria are important. They all overlap and build on each other. In order for a piece to reach its fullest potential it must succeed in all five areas simultaneously. For the sake of clarity we have dealt with them individually, but in reality the distinctions are not so clear cut.

As the competitor moves through the different levels of competition and eventually to the Masters and Advanced levels, technique/craftsmanship and accuracy as criteria are taken almost for granted, as these are the tools expected to have been mastered, allowing the artist to concentrate on the essence of the species and artistry of the competition piece entered. Please refrain from posting images of your work in progress to finished carving of your entry pieces on social media.

Some rules are open to individual interpretation, giving an artist as much artistic license as possible; some are very specific. It is up to the judges to interpret the rules with guidance from the Ward Foundation. The judges' decisions are final.

### DECORATIVE MINIATURE MEASURING CRITERIA

Entries must be one half lifesize or less. The Ward Foundation reserves the right to move entries deemed too large for miniature to the bench class.

### WATERFOWL PAIR

Unless otherwise stated, a waterfowl pair is a drake and a hen of the same species.



## Judging Criteria

### RULES FOR BEST IN CATEGORY AND DIVISION AWARDS

- First, Second and Third in Category winners (Division E, CD, GP, SW and YG) will be determined with First in Category being selected from the First in Species winners. Second in Category will be chosen from the remaining First in Species winners along with the Second in Species of the previously selected species. Third in Category will be chosen from the remaining First in Species winners plus the next runner-up at the species level in the species previously selected for First and Second in Category. In other words, it is possible to select First, Second, and Third in Category from the same species.

- Best in Division (All Divisions except World's, MH & H) will be selected from the winner of each of the Categories. Second in Division will be selected from the remaining First in Category winners plus the Second in Category winner from the previously chosen Category. Third in Division will be chosen from the remaining First in category winner(s) and the next runner-up at the Category level in the category(ies) previously selected for First and Second Division. In other words, it is possible for judges to select First, Second, and Third in Division from one species.

- Division MH & H will be judged for Best in Division with second and third awarded as well.

Competitors must submit documented reference materials at the time of registration for those birds not listed in the National Audubon Society's The Sibley Guide to Birds. These reference materials are necessary for the accurate judging of your bird. The Ward Foundation is not responsible for lost reference materials.





# WARD WORLD CHAMPIONSHIP

## An Observation a poem by J.B. Garton

There are Winners and Losers and Judges,  
the people of moderate fame!  
No utter the possible outcome,  
we're all involved in the game.  
Now, some of us struggle with Contests  
the essence of efforts and such,  
No matter how much we struggle,  
"The Efforts", they don't come too much.  
Then out of the Woods comes a Carver  
with a most original work,  
He'll humbly submit it for judgment,  
not knowing he's in for a jerk!  
The Contest has got to be Biased!  
The situation is not going well,  
The judges are all slightly Balmy  
By the pieces they pick; "You can tell!"  
The crowd is completely dumbfounded  
the awards have been placed, "You can see!"  
The ribbons they've placed on the winners  
Have certainly skipped you and me!  
No matter the facts or the outcome  
each time it's always the same;  
for conditions, Decisions, and Visions  
The judges are always to blame!  
As long as there's Contests to ponder  
to study some beauty of work,  
As long as we need a decision  
There remains this one simple quirk.  
We need an indifferent decider  
A person without any grudge,  
They call that poor soul to the forefront  
And tell him that he is the Judge!  
We try to be honest and humble  
But really, there's only one test,  
No matter which way you cut it  
The best are always the best

## Registration

- Provide documentation at registration about the construction of your entry that would help the judging process, i.e. structural strengthening techniques used in SR. These notations will be given to the judges for their attention during their initial evaluation.
- Any artist with an entry not suitable for tabletop display is required to notify the Ward Foundation by April 2. Under no circumstances should an artist drill (or attach in any way) an entry or base onto a table in the convention center.
- Artists are encouraged to place their business cards beside their work after judging is completed. Names of carvers of the Champagne Waterfowl Division entries will be identified by the Ward Foundation after judging if time allows.
- Youth carvers are welcome to enter "adult" levels of competition but once a carving is entered outside of the youth competition, it is no longer eligible to be judged in the youth competition.
- Please note that once an entry is placed in the competition hall, competitors will not be allowed to move their entry for any reason without prior permission of the show director or a floor captain nor enter the center areas of the World and Master divisions.
- Contact the Ward Foundation by email [kclattenburg@wardfdn.org](mailto:kclattenburg@wardfdn.org) with any questions. Visit us on the web at [wardfdn.org](http://wardfdn.org).
- The ultimate responsibility of accurately registering an entry rests with the carver. The Competition Committee reserves the right to move a carving prior to judging if it is discovered that it was inappropriately registered or misplaced.
- Sample Registration forms online at [wardfdn.org](http://wardfdn.org).

## 2024 Annapolis Decoy Show

*Sponsored by the Potomac Decoy Collectors Association*



**Sunday, June 2, 2024**

**9:00 a.m. – 3:00 p.m.**

**Annapolis Elks Lodge  
2 Pythian Drive  
Edgewater, Maryland 21037**

**Antique Duck Decoys, Contemporary Carvings, Hunting & Fishing Items,  
Sporting Art, Oyster Cans, Books, Special Exhibits, Buy, Sell, Trade**

**Free Admission ♦ Free Parking ♦ Free Identification & Appraisals**

For map and directions, visit: [elks622.com](http://elks622.com)

For more details: [chad.tragakis@gmail.com](mailto:chad.tragakis@gmail.com) or call (703) 593-3024





# REGISTRATION INFO

## Registration

Thursday, April 25, from 11 a.m.-8 p.m. and Friday, April 26, from 7-9 a.m.

LOCATION: Roland E. Powell Convention Center, 40th and Coastal Highway, Ocean City, Maryland.

- All entries must be hand-delivered either by the carver or a designated second party, except for mail-ins.
  - Mail-in entries will be accepted for Lem & Steve and Youth. See page XX for instructions.
  - Entry fees are paid at registration. Registration forms will be completed on-site.
  - The Ward Foundation will assign a registration number when your entries are processed.
  - The name of the competitor should not be visible on entries; covering with masking tape is adequate. The name of the species should be on the bottom of the base.
  - Competitors will receive a competitor badge and can purchase guest badges at registration, \$5 members and \$10 non-members.
  - Competitors will be allowed early admittance to the show at 8 a.m. Sunday. Official competitor name badges must be visibly worn to gain entry during these pre-show hours. Competitor's guests, with guest badges, may accompany the competitor.
  - We do not allow the removal of entries before 3 p.m. Sunday. All persons removing carvings must be carrying the registration receipt for those carvings.
  - Competitors are asked to submit documented reference materials at the time of registration for those birds not listed in the National Audubon Society's The Sibley Guide to Birds. These reference materials are for the accurate judging of your bird.
- Provide documentation at registration about the construction of your entry that would help the judging process, i.e. structural strengthening techniques used in SR. These notations will be given to the judges for their attention during their initial evaluation.
- Any artist with an entry not suitable for tabletop display is required to notify the Ward Foundation by April 2. Under no circumstances should an artist drill (or attach in any way) an entry or base onto a table in the convention center.
  - Artists are encouraged to place their business cards beside their work after judging is completed.

## Registration

- Names of carvers of the Champagne Waterfowl Division entries will be identified by the Ward Foundation after judging if time allows.
- Youth carvers are welcome to enter "adult" levels of competition but once a carving is entered outside of the youth competition, it is no longer eligible to be judged in the youth competition.
- Please note that once an entry is placed in the competition hall, competitors will not be allowed to move their entry for any reason without prior permission of the show director or a floor captain nor enter the center areas of the World and Master divisions.
- Contact the Ward Foundation by email [kclattenburg@wardfdn.org](mailto:kclattenburg@wardfdn.org) with any questions. Visit us on the web at [wardfdn.org](http://wardfdn.org).
- The ultimate responsibility of accurately registering an entry rests with the carver. The Competition Committee reserves the right to move a carving prior to judging if it is discovered that it was inappropriately registered or misplaced.
- Sample Registration forms online at [wardfdn.org](http://wardfdn.org).

## Castle IN THE Sand HOTEL

**SUITES • EFFICIENCIES • CONDOS • ROOMS • COTTAGES**

- Coconuts Beach Bar & Grill
- Beach House Restaurant
- Take A Dip Ice Cream Shop
- Olympic Pool & Diving Board
- Beach Equipment Rentals
- Free Children's Activities
- Free Wireless Internet
- Wait Service on the Beach
- Live Music on Coconuts Patio
- Meeting Room
- Senior Citizen Rates
- Hot Deals & Discount Rates

Come stay in our Castle by the sea,  
where we treat you like Royalty!



Always your best rate when booking  
by phone or on our website!



Oceanfront at 37th Street  
410/289-6846 • 800/552-SAND

[www.castleinthesand.com](http://www.castleinthesand.com)



# MAIL-IN INSTRUCTIONS

For international artists and competitors please check with U.S. Customs before shipping. The Ward Foundation is not responsible for any loss or damage to mail-in entries. Please email [kaclattenburg@wardfdn.org](mailto:kaclattenburg@wardfdn.org) for UPS or FedEx address.

## MAIL/SHIP TO: USPS

**Ward Foundation, Inc, PO Box 2132, Salisbury, MD 21802**

DEADLINE: Must be received by April 15, 2024.

1. Entrants must pre-pay with credit card, check or money order:

a. Shipping, including a pre-paid, return-postage, shipping label with insurance. Record tracking numbers for your own records.

b. \$5 handling fee per box (not per entry). Fee not required for youth entries.

c. Entry fees, including membership or \$10 non-membership fee.

2. Entrants must complete registration form(s).

a. You may download a sample form from [www.wardfdn.org](http://www.wardfdn.org).

b. The sample form is not an official registration form. Your entry will be registered by the competition registrar.

c. Complete the sample form ensuring all information, including entry fees, is correct.

d. Enclose payment with the correct totals. Carvings mailed without full payment will not be entered.

e. You must sign the sample form to authorize registration of your entries and compliance with all rules, guidelines and waivers.

f. Make a copy of your filled-out, sample registration form for your own records.

g. In an envelope, enclose the completed registration form(s) as well as your payment and return postage label. Put the envelope in the shipping box with your carving(s).

3. Carvings will be shipped to the owners no later than two weeks after the competition. Arrival times will vary depending on your distance from Salisbury, MD.

4. If you or your agent will be picking up your carving at the show closing (Sunday, 3 p.m.), please provide instructions along with your sample registration form.



5. Packing Recommendations: The following is based on recommendations of USPS, UPS, and FedEx to ensure the utmost safety for your carvings.

a. Use a rigid corrugated box large enough for carving(s) and cushioning materials.

b. Wrap each carving separately using proper cushioning material such as bubble wrap.

c. Each carving should be surrounded by at least two inches of cushioning and be placed at least two inches from inside wall of box. Use peanuts or foam for loose fill to avoid shifting.

d. Enclose envelope with sample form, fee payments, and return postage label.

e. Seal box securely with packing tape.

6. Mail in box.

**Please No Stamps for return postage. Postage to ship back can be added on to your check or credit card payment for registration.**

## Krausman's Wildlife Reference Photos & Woodcarving Studio



*Pamyla L. Krausman  
James M. Krausman*

1750 S. County Rd. 557  
Gwinn, Michigan 49841  
Toll Free 1-877-572-8762  
[www.referencephotos.com](http://www.referencephotos.com)



# 2024 WORLD COMPETITION CHAMPION LEVEL

THE SIX WORLD DIVISIONS PROVIDE THE OPPORTUNITY FOR ADVANCED LEVEL CARVERS TO COMPETE FOR THE TITLE OF WORLD CHAMPION. THESE ARE ELITE DIVISIONS FOR THOSE CARVERS WHOSE WORK DEMONSTRATES THE HIGHEST LEVEL OF ARTISTRY AND TECHNIQUE. JUDGING STANDARDS ARE THE MOST DEMANDING WITH THE VERY BEST CARVINGS EARNING THE TITLE "BEST IN WORLD." IF A CARVER ENTERS IN THE WORLD CLASS AND PLACES IN THE FUTURE THEY MUST ENTER MASTERS; IF THEY DO NOT PLACE AND NEVER HAVE PLACED, THEY MUST ENTER ADVANCED.

**Any artist with an entry not suitable for tabletop display is required to notify the Ward Foundation by April 2, 2024.**

## ENTRY FEE

\$150 per entry, each division

Entries are limited to one per division. World division competitors entering additional pieces must enter at the Advanced levels or, if qualified, at the Masters level.

## Divisions

A–Decorative Lifesize Wildfowl

B–Decorative Lifesize Waterfowl Pair

C–Decorative Miniature Wildfowl

D–Interpretive Wood Sculpture

SR–Shootin' Rig

WG–Single Gunner Decoy

1. Entries must never have entered at the Ward World Championship before.
2. Entries must be original in design and concept. If after judging it is determined that this policy has been ignored, the award will be rescinded.
3. Entries are limited to one per Division, per entrant.
4. Species and sex must be designated on the entry.
5. Name of artist should not be visible.

## **Divisions A and C–Decorative Lifesize Wildfowl and Decorative Miniature Wildfowl**

Entries will be judged on Technique/Craftsmanship, Accuracy, Essence of Species, and Artistry and Overall Presentation.

1. The entry will consist of one or more birds of any species with emphasis on creating an innovative and artistic composition.
2. Entries are to be made of wood. Other materials may be used for habitat and structural purposes; however, they are to be hand formed with the exception of eyes.

## **Division B–Decorative Lifesize Waterfowl Pair**

The 2024 species is a Black Duck. Entries will be judged on Technique/Craftsmanship, Accuracy, Essence of the Species, Artistry, Overall Presentation and Proper Floatation.

1. Entries are to be made of wood; glass eyes are permitted and materials other than wood can be used in fragile tails and crests.
2. Entries must float in a natural position but do not have to self-right.
3. Judging for Decorative Lifesize Waterfowl will be limited to the designated waterfowl only.
4. If a base is used, it must be separate from the carving and indicate placement. The base will not be considered part of the carving and will not be displayed during judging.
5. Any deterioration of the paint or structural integrity at the completion of judging will result in the disqualification of the entry.

## **Division C–Decorative Miniature Wildfowl**

1. Entries must be one half lifesize or less. All other criteria are the same as Division A.

## **Division D–Interpretive Wood Sculpture**

Entries will be judged on craftsmanship, artistry, interpretation of the essence of the wildfowl and originality. A carving should emphasize form, content and movement rather than a realistic duplication of the wildfowl. It should be presented in a style that provokes thought and wonder.

1. Subject may be entrant's choice of any wildfowl.
2. Entry is to be entirely of wood with the exception of the structural elements. The base may be of other material and will be considered as part of the sculpture.
3. If a supporting pedestal under the base is needed, it must be provided by the artist and it will not be considered as part of the sculpture.
4. Interpretive Wood Sculpture entries have no size restrictions.

## **World Lifesize Waterfowl Pair Species:**

- 2024 Black Duck
- 2025 Harlequin Duck
- 2026 Blue Goose
- 2027 Mandarin Duck
- 2028 Scoter (any, worldwide)
- 2029 Puffin (all and a pair)





# 2024 WORLD COMPETITION CHAMPION LEVEL

## Division SR–Shootin’ Rig

These decoys are rooted in the classic gunning decoys’ function and design. As a World Class division, they are judged on Technique/Craftsmanship, Accuracy, Artistry, Overall Presentation and Proper Floatation. Judging is a two-part process. It begins on the table where they are judged in hand and reviewed for compliance of the rules. Final judging is done while the entries are floating on Assawoman Bay at a minimal distance of 20 feet. Judges remain on the judge’s platform until the judging is completed. Decoys once set remain at anchor for the duration of judging.

1. Any worldwide species of waterfowl, including pelagic and coastal seabirds, may be selected. All seasonal plumages are acceptable.
2. Three birds are required: a drake and hen of the same species with a third bird of choice.
3. Decoys shall be floated as a rig and they must self right. Anchor lines with a maximum length of 6 to 8 feet will be attached to each rig component. Sufficient weights are required.
4. Decoys will be judged under natural weather conditions in Assawoman Bay and demonstrate proper floatation.
5. Decoys shall be constructed of wood or cork; glass eyes are permitted. All vulnerable areas must be durable; materials other than wood can be used in tails and crests. During registration, carvers have the option to submit in writing any structural strengthening techniques used in their rig. This information will be identified by carver’s number and given to the judges during their initial evaluation.
6. No burning or fine stoned texturing is allowed. However, simulated texture using gesso, modeling paste, or texture paint in combination with combing, scratching, or brushing is acceptable. Minimal carving techniques used to simulate feather texture on heads, i.e. merganser heads, are acceptable.
7. Any deterioration of the paint or structural integrity at the completion of judging will result in the disqualification of the entry.

## Division WG – Single Gunner Decoy

The 2024 species is a Ring-Necked Duck (Drake). This division emphasizes simplicity and most resembles the functional tool of the decoy maker. Entries will be reviewed for compliance with rules prior to judging. Decoys will be judged 20 feet from the judges on Assawoman Bay (weather dependent).

1. Carving and painting should be functional enough to be used as tools for hunting. No undercut feathers. Wood, cork and canvas allowed.
2. Decoys will be floated and must self-right from any position, except geese, swan and confidence, which must right only from their side(s). All entries will be judged for stability and proper floatation.
3. Carvings must be a drake of said species. They should be lifesize or oversized with no preference shown by judges.
4. No burning or fine-stoned texturing is allowed. However, simulated texture using gesso, modeling paste or texture paint in combination with combing, scratching or brushing is acceptable. Minimal carving techniques used to simulate feather texture on heads, i.e. merganser heads, are acceptable.
5. Painting: Can be simple in style, or in the style of a contemporary antique with no preference shown by judges.
6. Any deterioration of paint or structural integrity at the completion of judging will result in the disqualification of the entry.

### World Single Gunner Species:

2024 Ring-Necked Duck (Drake)

2025 Blue Goose

2026 Black Duck (Drake)

2027 Goldeneye (Drake)

2028 White-fronted Goose

## AWARDS

A-Decorative Lifesize Wildfowl

BEST IN WORLD John Scheeler Memorial Award

\$3,000, trophy, Champion ring, and rosette

SECOND IN WORLD \$1,500 and rosette

THIRD IN WORLD \$750 and rosette

C-Decorative Miniature Wildfowl

BEST IN WORLD

\$3,000, trophy, Champion ring, and rosette

SECOND IN WORLD \$1,500 and rosette

THIRD IN WORLD \$750 and rosette

SR- Shootin’ Rig

BEST IN WORLD Jimmy Vizier Memorial Award

\$3,000, trophy, Champion ring, and rosette

SECOND IN WORLD \$1,500 and rosette

THIRD IN WORLD \$750 and rosette

B- Decorative Lifesize Waterfowl Pair

BEST IN WORLD Tan Brunet Memorial Award

\$3,000, trophy, Champion ring, and rosette

SECOND IN WORLD \$1,500 and rosette

THIRD IN WORLD \$750 and rosette

D- Interpretive Wood Sculpture

BEST IN WORLD

\$3,000, trophy, Champion ring, and rosette

SECOND IN WORLD \$1,500 and rosette

THIRD IN WORLD \$750 and rosette

WG- Single Gunner Decoy

BEST IN WORLD Rich Smoker Heritage Award

\$3,000, trophy, Champion ring, and rosette

SECOND IN WORLD \$1,500 and rosette

THIRD IN WORLD \$750 and rosette



# 2024 LEVELED COMPETITION

## MASTERS

THE MASTERS CLASS OPENS UP OPPORTUNITIES FOR CHAMPION CARVERS TO ACHIEVE A NEW LEVEL OF EXCELLENCE IN THEIR ART AND TO BE RECOGNIZED AND HONORED WITH AWARDS AT THIS MOST COMPETITIVE LEVEL.

Only carvers who have previously won two Best of Division awards in Advanced, or placed 1st, 2nd or 3rd in World in any division other than SR, Shootin' Rig, are eligible to enter in Masters. They are eligible to enter any of the four divisions of the Masters Class competition and/or they may elect to compete for a World title. This applies to either an individual carver or a carver in partnership with another artist. If it is discovered that a carver has entered Masters without meeting the eligibility requirement, the entry will be immediately removed from the Masters area. If judging has already occurred, any awards will be rescinded.

Any artist with an entry not suitable for tabletop display is required to notify the Ward Foundation by April 2, 2024.

## ENTRY FEE

\$100 first entry, \$50 each additional entry

## DIVISIONS

ME–Decorative Floating Lifesize Waterfowl

MF–Decorative Lifesize Wildfowl

MG–Decorative Miniature Wildfowl

MH–Interpretive Wood Sculpture

1. Entries must never have entered at the Ward World Championship before.
2. Entries are to be made out of wood. Other materials may be used for habitat and structural purposes; however, they are to be hand-formed with the exception of eyes.
3. Multiple entries in each division are allowed.
4. Sex and species must be designated on the entry.
5. Name of the artist should not be visible.

---

Special Thanks: Jeff and Marg Bounds wish to recognize the high level of achievement attained by the winners of this prestigious competition by sponsoring the Master Medallions in the memory of their parents, Charles and Eleanor Bounds. Thank you to the Bounds Family.



## Division ME– Decorative Lifesize Floating Waterfowl

1. Decorative Lifesize Floating Waterfowl consists of three categories: Marsh Ducks; Diving Ducks; and Geese, Swan and Confidence.
2. If the artist enters more than one carving of the same species, both sexes must be represented.
3. Entries are to be made of wood; glass eyes are permitted and materials other than wood can be used in tails and crests.
4. Entries must float in a natural position but do not have to self-right.
5. Judging will be limited to the waterfowl floating in the tank only.
6. Any deterioration of the paint or structural integrity at the completion of judging will result in the disqualification of the entry.

## Division MG–Decorative Miniature Wildfowl

1. Entries must be one half lifesize or less.

## Divisions ME, MF and MG

1. Entries will be judged on Technique/Craftsmanship, Accuracy, Essence of Species, and Artistry and Overall Presentation.
2. Divisions MF and MG are divided into the following categories with species in each category judged against one another:  
Category 1: Waterfowl, Shorebirds, Wading Birds and Seabirds  
Category 2: Upland Game Birds, Birds of Prey  
Category 3: NP Land Birds and Songbirds

## Division MH–Interpretive Wood Sculpture

- Entries will be judged on artistry, interpretation of the essence of the wildfowl and originality. A carving should emphasize form, content and movement rather than a realistic duplication of the wildfowl. It should be presented in a style that provokes thought and wonder.
1. Subject may be the entrant's choice from any wildfowl.
  2. Entry is to be entirely of wood with the exception of the base and eyes. The base may be of other material and will be considered as part of the sculpture.
  3. If a supporting pedestal under the base is needed, it must be provided by the artist and it will not be considered as part of the sculpture.
  4. Interpretive Wood Sculpture entries have no size restrictions.



# 2024 LEVELED COMPETITION

## MASTER AWARDS

### ME—Masters Decorative Lifesize Floating Waterfowl

	FIRST	SECOND	THIRD
3 Categories	ribbon	ribbon	ribbon
Best in Masters.	\$1000	\$500	\$250
	Rosette & Medallion	Rosette & Medallion	Rosette & Medallion

### MF—Masters Decorative Lifesize Wildfowl

	FIRST	SECOND	THIRD
3 Categories	ribbon	ribbon	ribbon
Best in Masters.	\$1000	\$500	\$250
	Rosette & Medallion	Rosette & Medallion	Rosette & Medallion

### MG—Masters Decorative Miniature Wildfowl

	FIRST	SECOND	THIRD
3 Categories	ribbon	ribbon	ribbon
Best in Masters	\$1000	\$500	\$250
	Rosette & Medallion	Rosette & Medallion	Rosette & Medallion

### MH—Interpretive Wood Sculpture

	FIRST	SECOND	THIRD
Best in Masters	\$1000	\$500	\$250
	Rosette & Medallion	Rosette & Medallion	Rosette & Medallion

## Division ME— Decorative Lifesize Floating Waterfowl

1. Decorative Lifesize Floating Waterfowl consists of three categories: Marsh Ducks; Diving Ducks; and Geese, Swan and Confidence.
2. If the artist enters more than one carving of the same species, both sexes must be represented.
3. Entries are to be made of wood; glass eyes are permitted and materials other than wood can be used in tails and crests.
4. Entries must float in a natural position but do not have to self-right.
5. Judging will be limited to the waterfowl floating in the tank only.
6. Any deterioration of the paint or structural integrity at the completion of judging will result in the disqualification of the entry.

## Division MG—Decorative Miniature Wildfowl

1. Entries must be one half lifesize or less.

## Divisions ME, MF and MG

1. Entries will be judged on Technique/Craftsmanship, Accuracy, Essence of Species, and Artistry and Overall Presentation.
2. Divisions MF and MG are divided into the following categories with species in each category judged against one another:  
Category 1: Waterfowl, Shorebirds, Wading Birds and Seabirds  
Category 2: Upland Game Birds, Birds of Prey  
Category 3: NP Land Birds and Songbirds

## Division MH—Interpretive Wood Sculpture

- Entries will be judged on artistry, interpretation of the essence of the wildfowl and originality. A carving should emphasize form, content and movement rather than a realistic duplication of the wildfowl. It should be presented in a style that provokes thought and wonder.
1. Subject may be the entrant's choice from any wildfowl.
  2. Entry is to be entirely of wood with the exception of the base and eyes. The base may be of other material and will be considered as part of the sculpture.
  3. If a supporting pedestal under the base is needed, it must be provided by the artist and it will not be considered as part of the sculpture.
  4. Interpretive Wood Sculpture entries have no size restrictions.



## Curt's Waterfowl Corner



*...where personal attention makes every carver feel like a champion!*



Complete Line of Quality Art & Carving Supplies

### The Best Tupelo Gum!

Air dried and cut to order! Also, song and shorebird sizes and cut outs, your patterns or ours!

**WE TAKE PRIDE IN THE  
SELECTION & CUTTING  
OF YOUR WOOD**

We at Curt's are glad to announce that we will again be selling our Tupelo Wood from our trailer parked outside of the main entrance of the Convention Center – Driving up with a batch of wood for this event – A super show for all – Tell your friends about us.

**The Fabre family. . .**

4033 Country Dr. • Bourg, LA 70343  
985-580-3014 • Fax 985-851-2328  
Toll Free 800-523-8474 (orders)  
Curtis J. Fabre, Proprietor



# 2024 LEVELED COMPETITION

## **ADVANCED, INTERMEDIATE AND NOVICE**

CARVERS MAY ENTER AT ONLY ONE LEVEL WITHIN ADVANCED, INTERMEDIATE AND NOVICE. WORLD DIVISION COMPETITORS ENTERING ADDITIONAL PIECES MUST ENTER AT THE ADVANCED LEVEL OR, IF QUALIFIED, AT THE MASTERS LEVEL.

Any artist with an entry not suitable for tabletop display is required to notify the Ward Foundation by April 2, 2024.

### **ADVANCED CLASS**

REPRESENTS ADVANCED AMATEUR AND PROFESSIONAL CARVERS, INCLUDING THOSE WHO HAVE OBTAINED TOP RANKINGS IN COMPETITIONS.

### **ENTRY FEES**

\$60 First entry, \$35 Each additional entry

### **INTERMEDIATE CLASS**

THE INTERMEDIATE CLASS INCLUDES CARVERS WHO HAVE ADVANCED BEYOND THE NOVICE LEVEL.

### **ENTRY FEES**

\$35 First entry, \$15 Each additional entry

### **NOVICE CLASS**

THE NOVICE CLASS IS RESERVED FOR ENTRY-LEVEL CARVERS.  
SEE PAGE 21.

### **ENTRY FEES**

\$20 First entry, \$10 Each additional entry

### **Divisions**

E–Decorative Floating Lifesize Waterfowl  
F–Decorative Lifesize Wildfowl  
G–Decorative Miniature Wildfowl  
H–Interpretive Wood Sculpture  
J–Bench (Intermediate and Novice)

Entries must never have entered at the Ward World Championship before.



### **Divisions E, F, and G**

Entries will be judged on:

Technique/Craftsmanship, Accuracy, Essence of the Species, Artistry, and Overall Presentation.

1. ADVANCED and INTERMEDIATE entries must be original in design and concept. Work done directly from study birds, published patterns or a classroom project will NOT be considered as original in design and concept. If after judging it is determined that this policy has been ignored, the award will be rescinded. NOVICE carvers will be permitted to enter carvings created from published patterns. Entries created from study birds or classroom projects will not be permitted except in bench. Originality continues to be strongly encouraged.
2. Entries are to be made of wood. Other materials may be used for habitat and structural purposes; however, they are to be hand formed with the exception of eyes.
3. Novice only- Although hand-formed feet and legs are encouraged, novice carvers are permitted to use cast feet and legs.
4. Novice only – Although hand-formed habitat is encouraged, it is not required.
5. Name of the artist should not be visible.

### **Division E–Decorative Lifesize Floating Waterfowl**

1. Entries must be life sized.
2. If the artist enters more than one carving of the same species, both sexes must be represented.
3. Materials other than wood can be used in tails and crests.
4. Entries must float in a natural position but do not have to self-right.
5. Judging will be limited to the waterfowl floating in the tank only.
6. Any deterioration of the paint or structural integrity at the completion of judging will result in the disqualification of the entry.

### **Division F–Decorative Lifesize Wildfowl**

Entries must be life sized.

### **Division G–Decorative Miniature Wildfowl**

Entries must be one half lifesize or less. The Ward Museum reserves the right to move entries deemed too large for miniature to the bench class.





# 2024 LEVELED COMPETITION

## Division H—Interpretive Wood Sculpture

Entries will be judged on craftsmanship, artistry, interpretation of the essence of the wildfowl and originality. A carving should emphasize form, content and movement rather than a realistic duplication of the wildfowl. It should be presented in a style that provokes thought and wonder

1. Subject may be entrant's choice from any wildfowl.
2. Entry is to be entirely of wood with the exception of the base and eyes. The base may be of other material and will be considered as part of the sculpture.
3. If a supporting pedestal under the base is needed, it must be provided by the artist and it will not be considered as part of the sculpture.
4. Interpretive Wood Sculpture entries have no size restrictions.

## Division J—Bench (Intermediate and Novice Only)

This division is reserved for the entries that do not meet the rules for any other division. Classroom carvings, group projects with a group leader, and carvings from cast study birds are permitted only in this division and should be identified as such. Entries will be divided into four major categories: waterfowl, shorebirds, songbirds, and all other wildfowl.

1. Entries must be made of wood or cork. Glass eyes are permitted.
2. Waterfowl entries will not be floated during judging.

Jack Cox sponsors the Intermediate Division  
Dr. Kent Kimmel & Dr. Ruth Carroll sponsor the Novice Division



## AWARDS/ADVANCED

### E—Decorative Lifesize Floating Waterfowl

	FIRST	SECOND	THIRD
33 Species	ribbon	ribbon	ribbon
3 Categories	\$100 rosette	\$50 ribbon	\$25 ribbon
Marsh Ducks, Diving Ducks, Geese & Confidence Decoys	FIRST	SECOND	THIRD
Best in Division	\$400 rosette	\$200 rosette	\$100 rosette

### F—Decorative Lifesize Wildfowl

	FIRST	SECOND	THIRD
8 Categories	\$100 rosette	\$50 ribbon	\$25 ribbon
Waterfowl, Shorebirds and Wading Birds, Seabirds, Upland Game Birds, Birds of Prey, NP Land Birds, Songbirds A, Songbirds B			
Best in Division	\$400 rosette	\$200 rosette	\$100 rosette

### G—Decorative Miniature Wildfowl

	FIRST	SECOND	THIRD
8 Categories	\$100	\$50	\$25
Waterfowl, Shorebirds and Wading Birds, Seabirds, Upland Game Birds, Birds of Prey, NP Land Birds, Songbirds A, Songbirds B			
Best in Division	\$400 rosette	\$200 rosette	\$100 rosette

### H—Interpretive Wood Sculpture

	FIRST	SECOND	THIRD
Best in Division	\$400 rosette	\$200 rosette	\$100 rosette

## AWARDS/INTERMEDIATE AND NOVICE

First, second and third place winners at the species level, Intermediate Division E, will receive ribbons. First, second and third in Category (Division E, F, G and J) will receive rosettes with second and third receiving ribbons. First, second and third in Division (Division E, F, G, H and J) will receive rosettes. Best in Show overall will be selected from the Division Winners.

## INTERMEDIATE

	FIRST	SECOND	THIRD
Best in Show	\$100 rosette	\$50 rosette	\$25 rosette

## NOVICE

	FIRST	SECOND	THIRD
Best in Show	\$100 rosette	\$50 rosette	\$25 rosette





## LEVELED COMPETITION

### NOVICE LEVEL

- LIFESIZE
- FLOATERS
- MINIATURES
- INTERPRETIVE
- BENCH

### INTERMEDIATE LEVEL

- LIFESIZE
- FLOATERS
- MINIATURES
- INTERPRETIVE
- BENCH

### ADVANCED LEVEL

- LIFESIZE
- FLOATERS
- MINIATURES
- INTERPRETIVE

### MASTERS LEVEL

- LIFESIZE
- FLOATERS
- MINIATURES
- INTERPRETIVE

## WORLD CHAMPIONSHIP COMPETITION

### CHAMPION LEVEL WORLD CLASS

- LIFESIZE
- WATERFOWL PAIRS
- MINIATURES
- INTERPRETIVE
- SHOOTIN' RIG
- SINGLE GUNNER

## LEM & STEVE WARD COMPETITION

### HUNTING DECOYS

#### OPEN LEVEL

- CONTEMPORARY DECOYS
- GUNNING PAIRS
- SINGLE GUNNER
- CONTEMPORARY ANTIQUES
- SHOREBIRD DECOYS
- BENCH

#### CHAMPION LEVEL

- CONTEMPORARY DECOYS
- GUNNING PAIRS

### DECORATIVE SMOOTHIE

#### OPEN LEVEL

- SMOOTHIE WATERFOWL
- SHOREBIRDS & WADING BIRDS
- CHAMPAGNE WATERFOWL & WILDFOWL

#### CHAMPION LEVEL

- SMOOTHIE WATERFOWL
- CHAMPAGNE WATERFOWL & WILDFOWL

## DANNER FRAZER YOUTH COMPETITION

### DECORATIVE

### GUNNING DECOY

### SILHOUETTE

## SPECIAL COMPETITION

### SCULPTURE OTHER THAN WOOD

### CHAMPAGNE INTERPRETIVE



# 2024 YOUTH COMPETITION

## A. DANNER FRAZER YOUTH COMPETITION

### DECORATIVE, GUNNING DECOY, SILHOUETTE

THIS COMPETITION IS TO ENCOURAGE YOUTH TO BECOME ENGAGED IN THE ART FORM OF WILDFOWL CARVING, PROVIDE A VENUE TO PRESENT THEIR CARVINGS TO THE PUBLIC AND GIVE THEM THE COMPETITION EXPERIENCE. ENTRIES MAY BE DONE UNDER THE SUPERVISION OF AN ADULT, BUT THE YOUTH MUST DO THE CARVING AND PAINTING. DIVISIONS WILL BE DIVIDED INTO CATEGORIES AND CATEGORIES INTO SPECIES IF THERE ARE THREE OR MORE NUMBER OF ENTRIES.

#### ENTRY FEES

\$5 Per entry - Sponsored by Gary and Pam Stenger

#### Division YD - Decorative Wildfowl

Each age group will be judged 1st, 2nd and 3rd Best in Division.

YD1 - 16-17 years of age at time of registration

YD2 - 12-15 years of age at time of registration

YD3 - 11 and under years of age at time of registration

1. Prior entries into World Youth Competition are not permitted.

2. Entries are to be lifesize or less, realistic or interpretive in nature.

3. Decorative Waterfowl will not be floated.

4. Entries must be made of wood. Glass eyes are permitted. Other materials are permitted for habitat and structural purposes. Hand-formed habitat is encouraged but not required.

#### Division - YG Gunning Decoy

Entries will be reviewed for compliance prior to floating. The final judging of entries as gunning decoys shall be conducted while entries are floating on the bay at a minimum distance of 20 feet. Once set, decoys shall remain at anchor for the duration of judging. This division will be divided into three categories: Marsh Ducks; Diving Ducks; and Geese, Swan and Confidence.

YG1 - 15-17 years of age at time of registration

YG2 - 14 and under years of age at time of registration

1. Prior entries into competition at the World Championship are not permitted.

2. Carving should be simplistic without fragile areas. No highly defined wings or undercut feathers.



3. Entries must have 6 feet of line and an anchor. Decoys will be floated in the bay under natural conditions.

4. Painting should be simplistic. Combing and scratching are permitted.

5. Decoys must self right from any position except geese and confidence decoys which must right from the side.

6. Entries are to be made of wood, cork or stretched canvas; glass eyes are permitted and materials other than wood can be used in fragile tails and crests.

7. If entry is determined to be inappropriate for Gunning Division, it will be transferred to Decorative Division.

#### Division YS - Silhouette Songbird: Bluebird

Entries in this division can be done either as a group project or as an individual. One entry per person. Each age group will be judged 1st, 2nd and 3rd Best in Group.

YS1- 16-17 years of age at time of registration

YS2 - 12-15 years of age at time of registration

YS3 - 11 and under years of age at time of registration

1. Entries are to be made of wood, one inch thick or less and may be lifesize or less in size.

2. Edges may be rounded; wing and bill definition permitted.

3. Glass eyes are permitted.

4. Must be mounted on a simple base with a wood or metal dowel.

5. Entries should be realistically painted.

#### YOUTH AWARDS

YD - Decorative Wildfowl: YD1, YD2, YD3

FIRST	SECOND	THIRD
Rosette	Rosette	Rosette

Division YG - Gunning Decoy: YG1, YG2

	FIRST	SECOND	THIRD
3 Categories	Rosette	ribbon	ribbon
Best in Division	Rosette	Rosette	Rosette
	Plaque		

Division YS - Silhouette: YS1, YS2, YS3

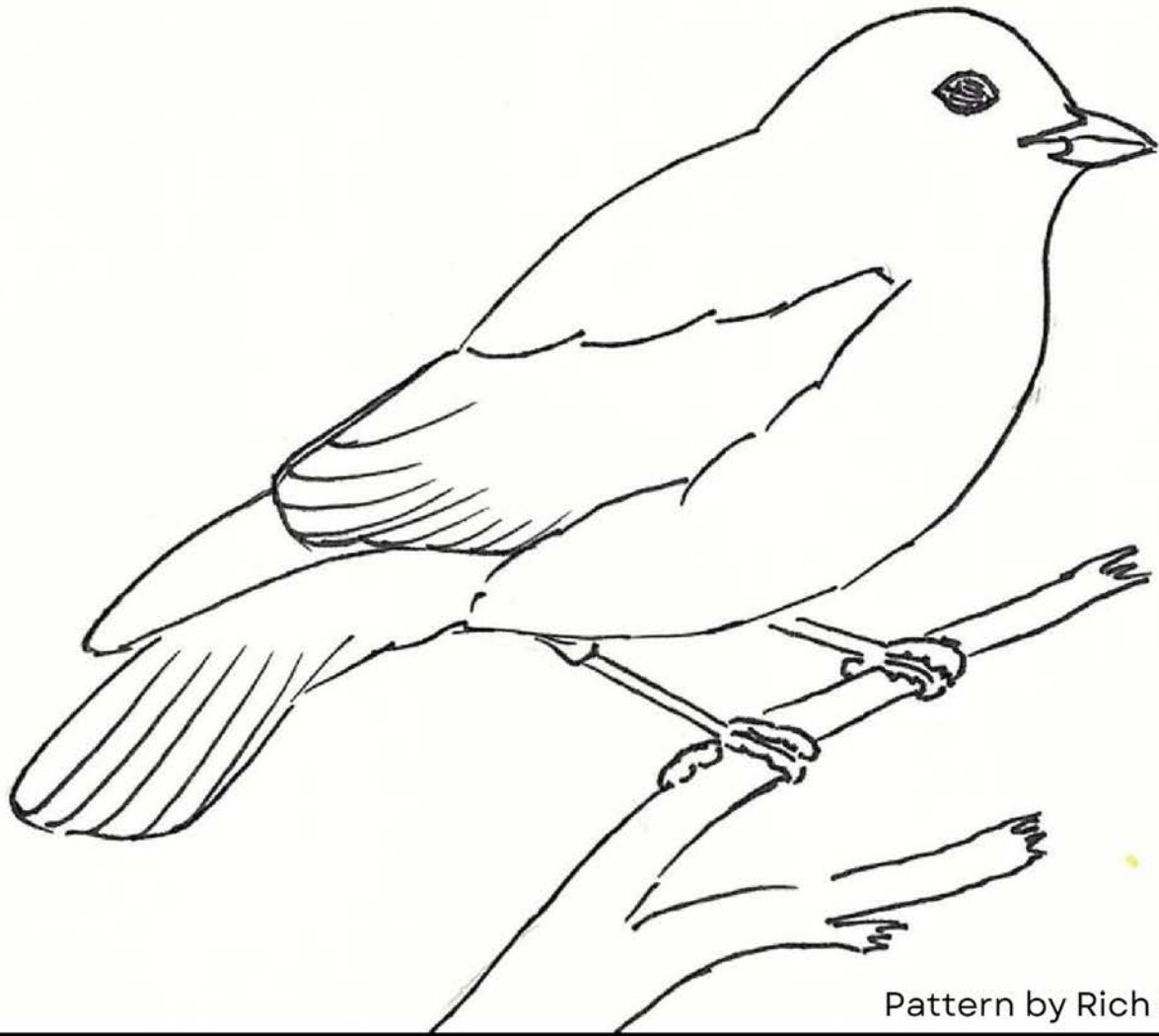
	FIRST	SECOND	THIRD
Silhouette	Rosette	Rosette	Rosette
	Plaque		

#### THANK YOU TO OUR SPONSORS!

- Entry fees provided by Gary and Pam Stenger
- Silhouette Division supported by the Habbart Dean Memorial Fund



# 2024 YOUTH COMPETITION



Pattern by Rich Smoker

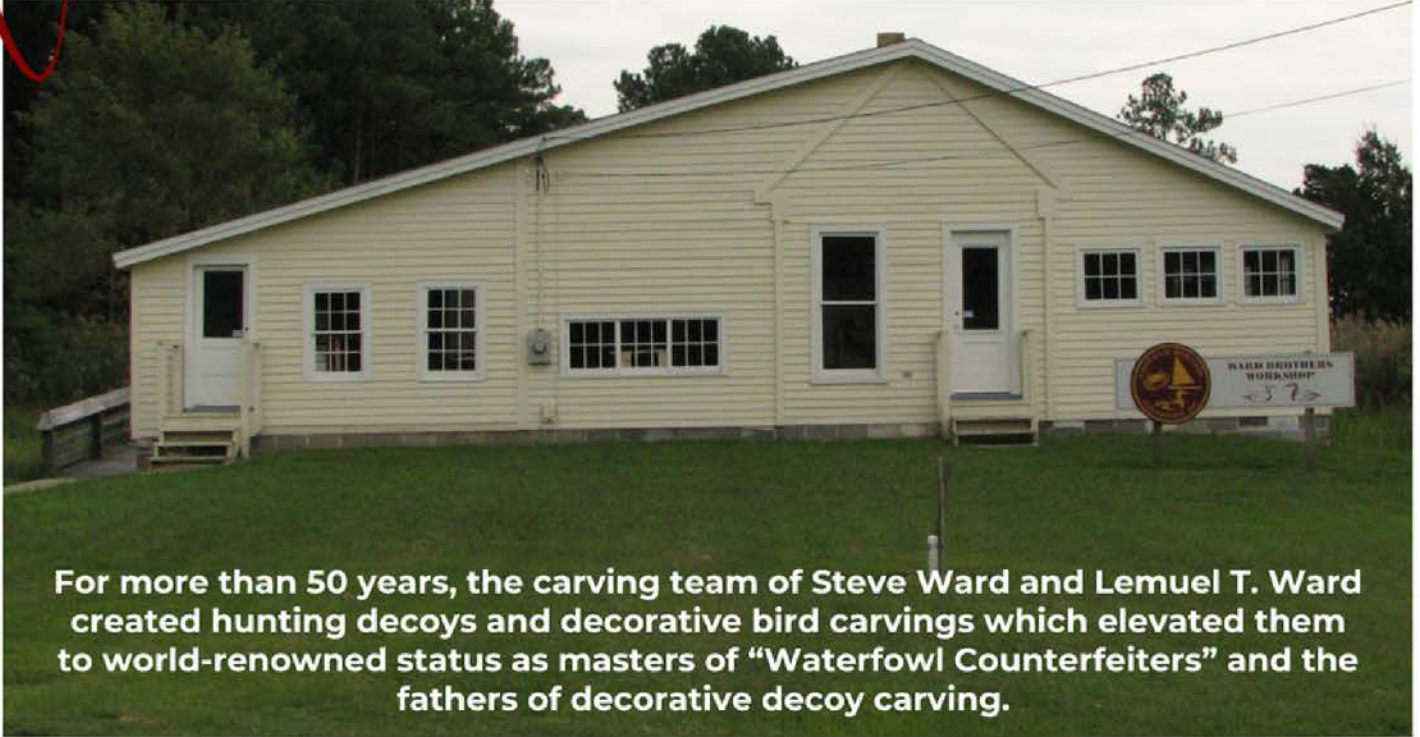




See where it all started...

Visit

# THE ORIGINAL WARD BROTHERS WORKSHOP



For more than 50 years, the carving team of Steve Ward and Lemuel T. Ward created hunting decoys and decorative bird carvings which elevated them to world-renowned status as masters of "Waterfowl Counterfeiters" and the fathers of decorative decoy carving.

## April 26-28, 2024

**Open for Tours...Call for an appointment.**

**410-968-2501**

**The Ward Brothers Workshop is**

**Located at 3195 Sackertown Rd, Crisfield MD**

Also, be sure to visit the Tawes Museum to view the film, "Nature's Counterfeiters" and to see many original carvings by the Ward Brothers and other Crisfield carvers. The museum is located at 3 Ninth St., Crisfield, Maryland 21817.

[crisfieldheritage.org](http://crisfieldheritage.org)





# 2024 LEM & STEVE WARD COMPETITION

## HUNTING DECOYS

### ENTRY FEES

\$35 First entry; \$15 Each additional entry

VIEW THE EVOLUTION OF DECOY CARVING THROUGH THE DIVISIONS OF THE LEM AND STEVE COMPETITION.

### Divisions

CA – Contemporary Antiques

CD, CDC –Contemporary Decoys

GP, GPC–Gunning Pair

SD–Shorebird Decoy

JB–Bench

Prior entries into competition at the World Championship are not permitted.

**Divisions CD, CDC, GP, GPC** - Waterfowl are to be made of wood, cork or stretched canvas; glass eyes are permitted and materials other than wood can be used in fragile tails and crests.

### **Division CD & CDC–Contemporary Decoy**

Entries are modern contest grade decoys, judged on form and function.

This division is divided into two levels, CD and CD Champion (CDC). The rules for each level are the same. CD is open to all except for those who qualify for the Champion level.

The Champion level will be divided into three categories: Marsh Ducks; Diving Ducks; and Geese, Swan, and Confidence. Anyone who has placed in a World division, competes at the Masters level or has won two best in shows at the World in CD must enter the Champion level. Anyone can choose to enter CDC, but once they have competed at the CDC level they cannot return to the regular CD.

1. Decoys will be floated in the tanks and must self-right from any position, except Geese, Swan and Confidence, which must right only from their side(s). All entries will be judged for stability and proper floatation.
2. Carvings must have sturdy tails and all raised wings must be durable.



3. No burning or fine stoned texturing is allowed. However, simulated texture using gesso, modeling paste, or texture paint in combination with combing, scratching, or brushing is acceptable. Minimal carving techniques used to simulate feather texture on heads, i.e. merganser heads, are acceptable.

4. Painting techniques shall be typical of a modern functional decoy. Entries may include some simple blending of feather edges and internal markings, feather splits, highlighting and hand vermiculation. (Carvings with fully developed decorative painting should be entered into Smoothie Waterfowl.)

5. Any deterioration of the paint or structural integrity at the completion of judging will result in the disqualification of the entry.

### **Division SG, GP & GPC–Single Gunner and Gunning Pairs**

This Division emphasizes simplicity and most resembles the functional tool of the decoy maker. Entries will be reviewed for compliance with rules before floating. Thereafter the judges will remain on the judge's platform until the judging is complete. The final judging of entries as functional decoys shall be conducted while entries are floating on the bay at a minimum distance of 20 feet. Once set, decoys will remain at anchor for the duration of judging. This division will be divided into two levels, GP and GP Champion (GPC). The rules for each level are the same. GP is open to all except for those who qualify for the Champion level.

The Champion level will be divided into three Categories: Marsh Ducks; Diving Ducks; and Geese, Swan, and Confidence. Anyone who has placed in a World division or competes at the Masters level or has won 2 best in shows in CD or GP must enter the Champion level. Anyone can choose to enter GPC, but once they have competed in GPC level they cannot return to the regular GP.

1. Carving and painting should be functional enough to be used as tools for hunting. NO undercut feathers.
2. Decoys will be floated and must self-right from any position, except Geese, Swan and Confidence, which must right only from their side(s). All entries will be judged for stability and proper floatation.
3. Entries must be tandem rigged with 2-3 feet of line between decoys and must have 6 feet of line and a weight. They will be floated in the bay under natural conditions.



# 2024 LEM & STEVE WARD COMPETITION

4. Carvings must be hen and drake of the same species and should be life size or over sized with no preference shown by judges. \*Exception of Single Gunner.
5. No burning or fine stoned texturing is allowed. However, simulated texture using gesso, modeling paste, or texture paint in combination with combing, scratching, or brushing is acceptable. Minimal carving techniques used to simulate feather texture on heads, i.e. merganser heads, are acceptable.
6. Simplicity of painting is required.
7. Any deterioration of the paint or structural integrity at the completion of judging will result in the disqualification of the entry.

## Division CA—Contemporary Antique

Decoys will be judged in hand to include all surfaces and attachments. Contemporary Antique will be divided into 10 categories representing Pristine for antique style pieces which have not been subjected to any field use with minimal wear and patina permitted and Worn for pieces which have received heavy field use in which moderate to severe deterioration is apparent. There will be five categories each for Pristine and Worn: Marsh Ducks, Diving Ducks, Geese and Confidence, Shorebirds and All Others.

1. Entries can be inspired by old decoys from geographic areas but must be the carver's original design and interpretation of an 'old' decoy.
2. Entries will be a single decoy. Multiple birds, waterfowl memorabilia, and "copies" are not permitted.

3. All entries must be signed and dated.
4. Decoys should be made to look old by the manner in which they are carved, painted, and finished.
5. Shorebirds and Wading Birds must be mounted on a dowel and have a simple base.

## Division SD—Shorebird Decoy

Entries are contemporary shorebird decoys that emphasize the simplicity of line and paint. The division is divided into seven categories.

1. Entries will be a single decoy constructed of either wood or cork with no preference shown by the judges.
2. Separation between wings and tail is permitted providing both are durable.
3. Simplicity of painting is required.
4. Must be mounted on a simple base with a wood or metal dowel. \*Exception Single Gunner may be either sex.

## Division JB—Bench

This division is reserved for the entries that do not meet the rules for any other division. Classroom carvings, group projects with a group leader and carvings from CAST STUDY BIRDS ARE permitted in this division. Entries will be divided into four categories: waterfowl, shorebirds, songbirds, and all other wildfowl.

1. Entries must be made of wood or cork. Glass eyes are permitted.
2. Waterfowl entries will not be floated during judging.
3. Entries will not be considered as gunning decoys, therefore may be textured.



YOUR SUPPORT MATTERS

[www.wardfdn.org](http://www.wardfdn.org)



Memberships



Donations



Sponsorships



# 2024 LEM & STEVE WARD COMPETITION

## AWARDS

### CD—Contemporary Decoy

	FIRST	SECOND	THIRD
31 Species	ribbon	ribbon	ribbon
3 Categories	rosette	ribbon	ribbon
Best in Division	rosette	rosette	rosette

### CDC—Contemporary Decoy Champion

	FIRST	SECOND	THIRD
3 Categories	rosette	ribbon	ribbon
Best in Division	\$400 rosette	\$200 rosette	\$100 rosette

### SG—Single Gunner

	FIRST	SECOND	THIRD
31 Species	ribbon	ribbon	ribbon
3 Categories	rosette	rosette	rosette
Best in Division	\$150 rosette	\$100 rosette	\$50 rosette

### GP—Gunning Pairs

	FIRST	SECOND	THIRD
31 Species	ribbon	ribbon	ribbon
3 Categories	rosette	rosette	rosette
Best in Division	\$300 rosette	\$200 rosette	\$100 rosette

### GPC—Gunning Pairs Champion

	FIRST	SECOND	THIRD
3 Categories	rosette	ribbon	ribbon
Best in Division	\$400 rosette	\$200 rosette	\$100 rosette

### CA—Contemporary Antique

	FIRST	SECOND	THIRD
10 Categories	rosette	ribbon	ribbon
Best in Division	\$300 rosette	\$200 rosette	\$100 rosette

### SD—Shorebird Decoy

	FIRST	SECOND	THIRD
7 Categories	rosette	ribbon	ribbon
Best in Division	\$300 rosette	\$200 rosette	\$100 rosette

### JB—Bench

	FIRST	SECOND	THIRD
4 Categories	rosette	ribbon	ribbon
Best in Division	rosette	rosette	rosette

## DECOY MAGAZINE

*Celebrating America's finest folk art*

The **ONLY** magazine dedicated exclusively to decoy collectors

### SUBSCRIBE NOW!

*Includes 6 bi-monthly issues plus an annual Year in Review issue*

In the U.S.: \$45 year ♦ \$80 for 2 years | In Canada: \$60 year ♦ \$110 for 2 years

**Sample Copies:** \$12.95 each  
includes shipping

Online for over 25 years  
Visit us on Facebook!

*Gus Wilson  
lifted-wing preening black duck*

P.O. Box 787 ♦ Lewes, DE 19958  
(302) 641-9001 ♦ [decoymag@aol.com](mailto:decoymag@aol.com)

Visit us on the web at [decoymag.com](http://decoymag.com)



# 2024 LEM & STEVE WARD COMPETITION

## DECORATIVE SMOOTHIE

This competition challenges the artist to capture the essence of the species via form and paint. Only the bird will be judged, feet and habitat will not be considered. Entries are non-textured carvings done to the artist's highest abilities. The carving will be judged for the likeness and essence of species and artistry. SW and SS are to be lifesize. Only the Champagne Waterfowl Divisions will be floated.

Prior entries into competition at the World Championship are not permitted.

### Divisions

SW, SWC—Decorative Smoothie Waterfowl

SS—Decorative Smoothie Shorebirds and Wading Birds

CW, CWC—Champagne Waterfowl Division

## Division SW & SWC - Decorative Smoothie Waterfowl

This division will be divided into two levels, SW and SW Champion (SWC). The rules for each are the same. SW is open to all except those who must enter SW Champion.

The Champion level will be divided into three categories: Marsh Ducks; Diving Ducks; and Geese, Swan and Confidence. Anyone may choose to enter the Champion level, but anyone who has placed in a World Division, competes at the Masters or CD Champion level, or has won two best of divisions in Decorative Smoothie Waterfowl must enter the Champion level.

1. Entries will be a single decoy made of wood; glass eyes are permitted and materials other than wood can be used in fragile tails and crests.
2. Entries can either be flat-bottomed or have a keel. Preference will not be given to either by the judges.
3. Sturdy tails are not required. Realism and creative postures are encouraged.
4. Decorative painting to the artist's highest ability, i.e. barbles, translucence and shading are encouraged.
5. No burning, stoning or fine texturing is allowed.
6. Groups of feathers can be defined, i.e. tertials, scapulars, sidepockets, etc.

## Division SS - Decorative Smoothie Shorebirds and Wading Birds

1. Entries must be made of wood. Glass eyes are permitted.

2. Realism and creative postures are encouraged.
3. Decorative painting to the artist's highest ability is encouraged.
4. No burning or fine texturing is allowed.
5. The name of the species must be written on the bottom of the base.
6. Groups of feathers can be defined.

## Division CW & CWC - Floating - Champagne Waterfowl Division

Entries will be divided into four categories: Marsh Ducks, Diving Ducks, Geese, Swan and Confidence and Pelagic and Coastal Seabirds. J This division will be divided into two levels, CW and CW Champion. The rules for each are the same. CW is open to all except those who must enter CW Champion. Anyone can choose to enter the Champion level, but anyone who has placed in a World Division; competes at the Masters, CD or SW Champion level; or has won two best of divisions in Champagne Waterfowl must enter the Champion level. Once a person has entered CWC, they are not eligible to return to CW.

1. Entries must fit within a 3 1/2 inch circle.
2. Entries must float properly but do not have to self-right.
3. Entries can be either flat bottom or with a keel; the judges will not give preference to either.
4. Entries must be smooth. Groups of feathers can be defined, i.e. tertials, scapulars, side pockets, etc. No texturing is allowed.
5. There are no restrictions on paint.

## Division NCW & NCWC - Non-Floating - Champagne Wildfowl Division

Entries will be divided into categories: Songbirds, Raptors, Shorebirds, and Water birds and perching birds excluding ducks and geese. This division will be divided into two levels, NCW and NCW Champion. The rules for each are the same. NCW is open to all except those who must enter NCW Champion. Anyone can choose to enter the Champion level, but anyone who has placed in a World Division; competes at the Masters, CD or SW Champion level; or has won two best of divisions in Champagne Waterfowl must enter the Champion level. Once a person has entered NCWC, they are not eligible to return to NCW.

1. Entries must fit within a 3 1/2 inch circle.
2. Entries should be in realistic positions with feet. May be mounted on bases to enhance sculptural effects; the judges will not give preference to either.
3. Entries must be smooth. Groups of feathers can be defined, i.e. tertials, scapulars, side pockets, etc. No texturing is allowed.
4. There are no restrictions on paint.
5. Entries DO NOT need to float.



# 2024 LEM & STEVE WARD COMPETITION

## AWARDS

### SW–Decorative Smoothie Waterfowl

	FIRST	SECOND	THIRD
31 Species	ribbon	ribbon	ribbon
3 Categories	rosette	rosette	rosette
Best in Division	rosette	rosette	rosette

### SWC–Smoothie Waterfowl Champion

	FIRST	SECOND	THIRD
3 Categories	rosette	ribbon	ribbon
Best in Division	\$400	\$200	\$100
	rosette	rosette	rosette

### SS–Decorative Smoothie Shorebirds and Wading Birds

	FIRST	SECOND	THIRD
10 Categories	rosette	ribbon	ribbon
Best in Division	\$400	\$200	\$100
	rosette	rosette	rosette

### CW & NCW Floating & Non-Floating

	FIRST	SECOND	THIRD
4 Categories	rosette	ribbon	ribbon
Best in Division	\$800*	\$250	\$100
	rosette	rosette	rosette

## AWARDS

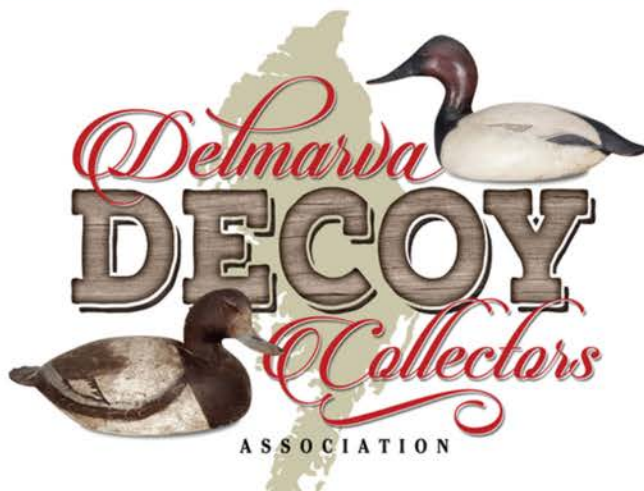
### CWC & NCWC Floating & Non-Floating

	FIRST	SECOND	THIRD
4 Categories	rosette	ribbon	ribbon
Best in Division	\$800*	\$250	\$100
	rosette	rosette	rosette

\* Purchase Award

## Thank you to our sponsors!

- Midshore Chapter of Delta Waterfowl sponsors the Single Gunner Division.
- Sharp Gas and Energy sponsors the Contemporary Antique Division.
- Chincoteague Decoy Carvers & Artists Association sponsors the Gunning Pairs Division.
- Lew & Nancy Pearce sponsor of the Champagne Divisions in memory of her father, who introduced them to the Ward Museum and wildfowl carving. Note that prize values have increased, thanks to the generosity of the Pearce Family!
- Captain Tommy Cornicelli sponsors Gunning Pairs Champion.



## JOIN OUR CLUB!

The **Delmarva Decoy Collectors Association** is a non-profit organization that promotes the knowledge, appreciation and collecting of vintage decoys and contemporary waterfowl carvings. Although our focus is on decoys made and used on the Delmarva Peninsula, we welcome members from all parts of the country!

## What the DDCA offers:

- ❖ Regular Monthly Meetings
- ❖ Special Collecting Events & Presentations
- ❖ Monthly Newsletters
- ❖ Guest Speakers
- ❖ Members-Only Facebook Group
- ❖ **ANNUAL DECOY SHOW**

## MEMBERSHIP DUES:

Only \$20 per year or \$50 for 3 years

## MEETINGS:

Held at Adam's Taphouse Grille in Fruitland the second Tuesday of each month

For more information, visit our website at  
**[DelmarvaDecoyCollectors.com](http://DelmarvaDecoyCollectors.com)**



**Also Like Us on Facebook!**  
[facebook.com/DelmarvaDecoyCollectorsAssociation](https://facebook.com/DelmarvaDecoyCollectorsAssociation)





# 2024 OTHER COMPETITIONS

**MDI Woodcarvers Supply**

PO Box 4, Pittsfield, Maine 04967

For Free Printed Catalog Call  
**800-866-5728**

Order online at [mdiwoodcarvers.com](http://mdiwoodcarvers.com)

*Are you looking for Low Prices with  
Fast Service?*

*No Need For Rocket Science  
to Figure This One Out.*



## DIVISION CI - CHAMPAGNE INTERPRETIVE

Entries will be judged on artistry, interpretation of the essence of the wildfowl, and originality. A carving should emphasize form, content, and movement rather than a realistic duplication of the wildfowl. It should be presented in a style that provokes thought and wonder. Natural finish ONLY.

1. Entries must fit within a 3 1/2-inch circle, this includes the base.
2. Subject may be entrant's choice from any wildfowl.
3. Entry is to be entirely of wood with the exception of the structural elements. The base may be of other materials and will be considered as part of the sculpture. There must be no or minimal assembly required when the carving arrives at the museum for staff to assemble.
4. If a supporting pedestal under the base is needed, it must be provided by the artist and it will not be considered part of the sculpture. If included, it must require only simple assembly, and instructions must be provided. Must also fit in the 3 1/2 inch circle/cylinder (Height limit of 7 inches tall).

## AWARDS

### CI - CHAMPAGNE INTERPRETIVE

	FIRST	SECOND	THIRD
Best in Division	\$250* rosette	rosette	rosette

\* Purchase Award

## SCULPTURE OTHER THAN WOOD

1. Any sculpture that has not been entered into a prior World Championship may be entered into competition.
2. Wildlife sculptures must be original in design and concept and may either be wildfowl or wildlife in subject matter.
3. Sculpture may be lifesize or miniature, realistic or interpretive in nature.
4. Artists may enter more than one sculpture.
5. Sculptures are to be of materials other than wood. A variety of finishing techniques may be utilized.
6. No casting from real wildlife is permitted.

## AWARDS

### AS - SCULPTURE DIVISION

	FIRST	SECOND	THIRD
Best in Division	\$400 rosette	\$200 rosette	\$100 rosette



**Dux' Dekes  
Decoy Company**

Since 1987, producing the finest carving blanks on the market today. Ducks, geese, loons, shorebirds, songbirds, raptors, upland game, wading birds and gimmers. We are now offering tupelo in our Premier blanks, along with select shorebirds, upland gamebirds, songbirds and raptors. You'll not find a wider, more diverse, high quality selection of blanks anywhere.



800-553-4725  
[www.duxdekes.com](http://www.duxdekes.com)  
1356 North Rd.  
Greenwich, New York, 12834



# OFFICIAL SPECIES DESIGNATIONS

## **DIVISIONS CD, SW, AND GP- CONTEMPORARY**

### **DECOY, DECORATIVE SMOOTHIE WATERFOWL, AND GUNNING PAIR, DECORATIVE LIFESIZE FLOATING WATERFOWL**

#### **Marsh Ducks**

Black Duck  
Blue-winged Teal  
Cinnamon Teal  
Gadwall  
Green-winged Teal  
Mallard  
Northern Pintail  
Shoveler  
Wigeon  
Wood Duck  
All Other

#### **Diving Ducks**

Bufflehead  
Canvasback  
Common Merganser  
Eiders  
Goldeneyes  
Hooded Merganser  
Long-tailed Duck  
Red-breasted Merganser  
Redhead  
Ring-necked Duck  
Ruddy Duck  
Scaup  
Scoters  
All Other

#### **Geese, Swan & Confidence**

Brant  
Coot  
Geese  
Grebes  
Swan  
Confidence and all others

## **DIVISION SS - SMOOTHIE SHOREBIRD & WADING BIRDS**

1. Avocet, Oystercatchers, Stilt  
2. Curlew, Whimbrel, Godwits  
3. Dowitchers, Knots, Dunlins  
4. Phalaropes, Woodcock, Snipe  
5. Plovers  
6. Yellowlegs, Red and Green Shank,  
Solitary Sandpiper  
7. Small Sandpipers (under 9")

8. Large Sandpipers, Willets,  
Turnstones  
9. Egrets, Herons  
10. All Other Waders & Shorebirds

## **DIVISIONS F AND G DECORATIVE LIFESIZE WILDFOWL / DECORATIVE MINIATURE WILDFOWL**

#### **Waterfowl**

Ducks  
Geese  
Swans

#### **Shorebirds & Wading Birds**

Avocet  
Coot  
Cranes  
Curlew  
Egrets  
Flamingo  
Gallinules  
Godwits  
Heron  
Ibises  
Knots  
Limpkins  
Oystercatchers  
Phalaropes  
Plovers  
Rails  
Sandpipers  
Snipe  
Spoonbill  
Stilt  
Stork  
Turnstones  
Whimbrel  
Woodcock  
Yellowlegs

#### **Upland Game Birds**

Grouse  
Guineafowl  
Partridge  
Peafowl  
Pheasant  
Ptarmigan  
Quail  
Turkeys

## **Birds of Prey**

Caracaras  
Eagles  
Falcons  
Hawks  
Kites  
Ospreys  
Owls  
Vultures  
Pelagic & Coastal Seabirds  
Albatrosses  
Anhinga  
Auks  
Boobies  
Cormorants  
Frigatebirds  
Gannets  
Grebes  
Gulls  
Jaegers  
Loons  
Pelicans  
Penguins  
Petrels  
Puffins  
Shearwaters  
Skimmers  
Skuas  
Terns  
Tropicbirds

## **Non-Passerine Land Birds**

Anis  
Barbets  
Bee-eaters  
Cuckoos  
Doves  
Goatsuckers  
Hoopoes  
Hornbills  
Hummingbirds  
Kingfishers  
Parrots  
Pigeons  
Roadrunners, Swifts,  
Toucans, Trogons  
Woodpeckers  
South American and Old  
World Sub-Oscine Passerines





# OFFICIAL SPECIES DESIGNATIONS

## Songbirds A - Oscine Passerines

Birds of Paradise  
Bluebirds  
Bowerbirds  
Catbirds  
Chats  
Chickadees  
Creepers  
Crows  
Dippers  
Flycatchers  
Gnatcatchers  
Jays  
Kinglets  
Larks  
Magpies  
Mockingbirds  
Nuthatches  
Pipits  
Robins  
Shrikes  
Swallows  
Thrashers  
Thrushes  
Titmice  
Vireos  
Wagtails, Warblers  
Waxwings  
Wrens

## Songbirds B - Oscine Passerines

Blackbirds  
Bobolinks  
Buntings  
Cardinals  
Cowbirds  
Crossbills  
Finches  
Grackles  
Grosbeaks  
Juncos  
Meadowlarks  
Orioles  
Redpolls  
Sparrows  
Starlings  
Tanagers  
Towhees

## MEMORIAL AWARDS

For additional information visit: [www.wardfdn.org](http://www.wardfdn.org)

- Dr. John P. Trabuchi Memorial Award Intermediate Decorative Lifesize Floating Waterfowl, Best Diver
- William Schultz Memorial Award Intermediate Decorative Lifesize Wildfowl, Best in Waterfowl Category
- Richard "Dick" LeMaster Memorial Award Intermediate Decorative Lifesize Floating Waterfowl, Best in Species Mallard Hen
- Mike Wavercak Memorial Award Intermediate Decorative Lifesize Floating Waterfowl, Best in Species Bufflehead
- Robert "Bob" Guge Memorial Award Novice Decorative Lifesize Wildfowl, Best Songbird



**SAVE THE DATE**

**OCTOBER 19, 2024**

**JOIN US FOR THE CHESAPEAKE CHALLENGE  
HELD DURING THE CRISFIELD HERITAGE  
FESTIVAL IN CRISFIELD, MARYLAND, HOME OF  
LEM & STEVE WARD**

## NOMINATE THE NEXT



VISIT THE LIVING LEGEND BOOTH IN AB HALL FOR MORE DETAILS



THANK YOU FOR YOUR SUPPORT



[www.coresound.com](http://www.coresound.com)



[www.awhm.org](http://www.awhm.org)



[www.lwccg.com](http://www.lwccg.com)





THANK YOU FOR YOUR SUPPORT

ALAN WYCHECK  
PHOTOGRAPHY



[www.alanwycheckphoto.com](http://www.alanwycheckphoto.com)



Handmade  
quality bases  
and plaques to  
embellish  
and display your  
artwork



*Mounting options  
to elevate your  
next carving!*

Accolades  
Islands  
Ovals  
Octagons  
Pedestals  
Pork Chops  
Rounds  
Squares  
& more



[windycapestudios@gmail.com](mailto:windycapestudios@gmail.com)  
703-338-2532  
[windycapestudios.square.site](http://windycapestudios.square.site)



Ocean  
City<sub>MD</sub>

[www.ococean.com](http://www.ococean.com)



**COMPLETE oceanfront getaway...**  
*the only thing missing is YOU!*



[www.grandhoteloceancity.com](http://www.grandhoteloceancity.com)

**Home of the Living Legends Dinner – Discount Hotel Accommodations Available**



**OCEANFRONT HOTEL ON THE BOARDWALK FEATURES:**

- 251 Deluxe Guest Rooms with Spectacular Ocean Views, Each Equipped with Microwaves, Mini Refrigerators, Coffee Makers, Irons and Ironing Boards, Spacious Balconies
- Complimentary Wi-Fi | 100% Smoke Free Guest Rooms
- Indoor Pool and Outdoor Pool with Sun Deck & Pool Bar\*
- Fitness Center & Acqua Day Spa
- Family Entertainment Area with Corn Hole, Pool Table, Arcade Games and Giant Chess Set
- Free Ample Parking in Adjacent Six Story Garage
- 5 On-site Dining Options, Boutique and Beach Shops\*

*\*seasonal hours may apply*

**GRAND**  
HOTEL

**21st Street & Boardwalk**  
2100 Baltimore Ave. | Ocean City, MD 21842  
800-447-6779 • 410-289-6191

**Everything in one place.**

[sales@sghoc.com](mailto:sales@sghoc.com)



# Razertip®

## LEAVE YOUR MARK™



SL1



SL3



P80



SK



SS-D10



Expansion  
modules  
available



P88

### Razaire™ MINI

#### Smoke Extractor Model X60

Enjoy a pyrography workspace that is fresh and clear of smoke with the Razaire™ MINI Smoke Extractor.

REPLACEABLE FILTERS

MULTI-STAGE CARBON FILTRATION

CAN BE USED VERTICALLY OR HORIZONTALLY



Follow us



**Razertip**  
PO Box 910, 301- 9th Street North, Martensville, SK Canada S0K 2T0  
Phone 306-931-0889 • Toll-free (Canada/U.S.A.) 1-877-729-3787  
info@razertip.com • razertip.com